

THE ELLENDALE COUNTRY CLUB
REPORTER

The Official Publication of Ellendale Country Club

Houma, LA

NOVEMBER 2015
Volume 23
Number 10



**ELLENDALE
COUNTRY CLUB
BOARD OF GOVERNORS**

2015-2016

ROBBIE NAQUIN,
PRESIDENT

JEFF BORDELON,
VICE PRESIDENT

BRET CUNEO

TROY CUNNINGHAM

JIMMY MIRE

FRANCIS "JACK" CLEMENTS

MICHAEL LEDET

MIKE DUGAS

MARK RENNER

Thanksgiving Buffet
at Ellendale Country Club



*Please join us
Thursday, November 26th, 2015
for our annual Thanksgiving feast.*

SOUP: CHICKEN & SAUSAGE GUMBO
ENTREES: ROASTED TURKEY, PORK ROAST, BRISKET, HAM, GREEN BEANS, CORN, SWEET PEAS, RICE DRESSING, SWEET POTATOES, CORN BREAD DRESSING, AND FRESHLY BAKED BREAD. **DESSERT CHOICES** TO INCLUDE PECAN PIE, PUMPKIN PIE, SWEET POTATO PIE, APPLE PIE, CARROT CAKE, AND COCONUT CAKE.

To make a reservation for our annual Thanksgiving buffet, please call 872-9924.



From the Ladies Tees

The Ellendale
Women's
Golf Association

Every Wednesday morning is Ladies' Day at Ellendale, and golfers of all skill levels are invited to play. We have standing tee times at 9:00am, 9:10am, and 9:20am. Interested players in need of a foursome should arrive no later than 8:45am.

If any you or your daughters are interested in learning more about golf and how it's played, leave a message in the Pro Shop or visit the Ellendale Ladies' Golf Association Facebook to arrange a meet up with a ladies' golf mentor.

The next meeting of the LGA is November 11 following play (around 12:45). Any woman interested in taking up golf is welcome to attend. Come have lunch, learn about golf, and get matched up with a practice partner!

Fall Match Play continues to progress and is moving into the final matches. Good luck to those still in it!

Visit our website at: www.ellendalecountryclub.com



PRESIDENT'S CORNER

ROBBIE NAQUIN



Fellow Club Members:

The Board of Governors has made a lot of progress since last month's newsletter has gone out. Just prior to our October 21st BOG meeting, we met with the staff of Ellendale Country Club. We wanted to get everyone in the same room to discuss the current financial status of the club, what we are doing to work through those issues, and clear the air regarding the many rumors they have been hearing. We felt it was owed to our employees, because not only do they love the Club as we do as members, but they also earn their livelihoods there. We also let them know that they were going to have to make sacrifices as we work through this current economic downturn, which will entail our salaried employees to take pay reductions, and hourly employees to take reductions in hours worked and / or overtime pay.

The main agenda item at our board meeting was to put a financial plan in place going forward. We set a realistic, minimal profitability target for our Food & Beverage department. This will be attained through diligent work with that department, primarily from a cost accounting / cost controls approach. Comparing this target to the loss we incurred in the last fiscal year, this should result in a net cash flow improvement of \$50,000. This can be attained, as this department was profitable prior to the greens renovation project. We also set other achievable cost cutting targets in our other departments, where we will rely on the department heads and their respective board committee members to ensure those targets are hit as soon as possible. Finally, we eliminated the position of General Manager.

With these changes, as well as the changes previously communicated in the Golf Course Maintenance Department, we project an annual cash flow improvement of \$225,000. Compare this to our cash flow deficit of (\$189,000) incurred in the last fiscal year when we were paying full principal and interest, it leads us in the right direction; however, with the drop in membership we have experienced, we will have a cash flow impact in our dues income category going forward. With that proforma dues loss, we are projecting financial results closer to cash flow break even with full debt payments being made at current membership levels; however, we have asked for interest only on our loan, as we do not know what that membership number will ultimately be. I've already met with representatives from our banking syndicate, asking them for temporary principal relief on our note, as it will take a few months to have the aforementioned changes worked through the system, and we also need to know what our baseline membership levels will be through this downturn. I have put together a memo outlining our plan, which I have submitted to the banks for their approval following the meeting. The additional cash savings by going to interest-only is another \$12,000 per month.

Also, as previously communicated, we are working on cost figures to fix our tennis courts and construct a new pool pavilion, as it is my intention, and the intention of this Board, to work towards not just having a first class golf facility, but also, having a first class Country Club. We are looking to cater not only to our members that are golfers, but also members who do not play golf. This is an action that must be taken soon, not only to help retain our existing membership base, but to also attract new, younger members to our Club in the future. This will have to be done through membership assessments and / or donations, as we cannot afford to make any further capital expenditures via long term debt. We will communicate more on this strategy, and the timing of such, as we work on our due diligence regarding its feasibility.

Continued on Page 3...

President's Report Continued...

As I have mentioned in previous communications, these are tough times for our Club. We were spending more cash than we were bringing in, a practice that was not sustainable. The Board looked at every potential option to reverse this course, with one such action including the decision not to retain our Golf Course Superintendent at his contract expiration.

That particular move has caused concern with many of our members, to a point where a petition was filed. The members that launched the petition, and many that have signed it so far, are extremely valuable and respected members of our Club, and we welcome the opportunity to have a discussion in the form of a Special Membership Meeting.

In closing, rest assured that the Board is doing all it can to protect the health of our club in both the short and long term, a task that you entrusted to us when we were elected. But this responsibility also brings the requirement to make difficult, unbiased decisions, many of which may be controversial or not fully understood. We'll continue to be as transparent as possible, and we welcome the opportunity for further discussion about our choices, with the first opportunity for this being the upcoming Special Membership Meeting. I encourage everyone to attend, ask questions, and let your voice be heard.

Once this is behind us, we can move forward with the focus on correcting our financial path, and ensuring we continue to deliver an outstanding product & value as the best country club in South Louisiana. This will take a unified effort of all the members to support the Club, an effort I believe we are fully capable of.

Notice to Stockholders:

There is a Special Stockholders' meeting scheduled for Wednesday, November 18th at 6:00pm.

**We would like to
Welcome the following new
members and their families to
Ellendale Country Club!**

Curtis Booker
Steven Kirby

Current Membership Total: 474



Tennis News

Meenakshi Sundaram, who is the Head Tennis Coach at Nicholls State University, is also the Tennis instructor here at Ellendale and currently utilizing the Tennis Courts. He is available for private lessons. 24 hour notification is needed to reserve the Tennis courts. Please contact Meenakshi by email or phone to reserve your time.

**To schedule a lesson and/or
reserve the Tennis courts contact the tennis
coach at**

**Email: cetennis@gmail.com or call
Ph. 830-624-5895**

Open Junior Clinic

Time: Saturdays 1:00pm-2:00pm
Dates: November, 7th & 14th
Maximum of four Juniors per clinic!

Any Junior Interested in learning this great game or getting their game on the right track contact 1st Assistant Professional, Jamie Womack at 985-876-4394 or stop by the Professional Shop for more information.

GOLF NEWS

THE GOLF REPORT

GREG CRAIN
HEAD GOLF PROFESSIONAL

October was a great month for golfing at Ellendale Country Club. The weather was outstanding with cooler temperatures, low humidity and very little rain which is perfect for golfing.

The golf shop's "super sale" continues this month with huge savings. Many name brand shirts are 40% off. This will be the time to pick up some early Christmas presents at great deals. The sale includes golf bags, golf clubs, golf shoes and various stocking stuffers. Come by the golf shop to check out these great deals.

October was a busy month for activities at Ellendale. October 5th opened with our hosting the SCIA Golf Tournament. Thanks to all that was involved to make this event a great success. October 10th and 11th was the Ellendale Club Championship weekend. Congratulations to all the flight winners and to Casey Rousell as the Men's club champion and Joann Blanchard as the Ladies club champion and Jacob Hamner as the junior club champion. October 13th was the annual Grant-A-Wish tournament sponsored by the State Troopers. Thanks to Captain Mark Richards and all the volunteers and sponsors that make this a special event for the Club, community and especially the children. On October 19th, the District Attorney, Joe Waitz, Jr. held his annual golf tournament at Ellendale. The day was beautiful with perfect weather and great Cajun cuisine for all the participants. Thanks for a great event for Ellendale and the community, see ya'll next year. October 24th and 25th was the MGA Ellendale Cup. Congratulations to Jamie and his team on a fantastic come from behind victory. The winning team consisted of Jamie Womack, Skip Jones, Brett Rutledge, Craig Matherne, Troy Baronet, Kirk Trussell, Hunter Haydel, Braden Eschete, Don Callais, Ray Hebert, Joe Bennett, Johnny Glover, Chad Wiley and Ross Bernal. The event on Sunday was contested in some of the worst conditions that golf could be played. The rain was coming down sideways and was not decided until the final match. I would like to commend all the participants that competed through those trying conditions!!!

This month's events opens on November 9th will host A Place of Restoration Golf Tournament in the morning. Come by the golf shop to pick up an application to support this great cause. November 16th will be a 12:30 start for the fundraiser for the Nicholls State Baseball team. For more information, stop by the golf shop or contact Head Baseball Coach Seth Thibodeaux, 985-449-7149.

Be sure to check the calendar and postings at the golf shop and clubhouse for upcoming events. And always, thanks for your support of the golf shop and Ellendale Country Club.

"2015 New Arrivals"

Adidas Golf

-Men's Climachill & Climacool Apparel
40% Off Sale

Ashworth

Cardiff Footwear Special
Sale Price: \$99.99

Callaway Golf

-Big Bertha Alpha 816 Series Driver, Fairway Woods, Hybrids
-Great Big Bertha Series Driver, Fairway Woods, Hybrids

Mizuno Golf

Mizuno Fitting Cart with the latest shaft optimizer and iron model in multiple head weights, Shaft Optimizer software program contains bend profiles for all 47 shafts offered

Nike Golf

-Tiger Woods & Tour Performance Apparel
-Men's & Women's LSU & Saints Apparel
-Men's & Women's F1 Impact 2 Footwear
-Men's TW '15 Footwear Special

Ping Golf

-New Ping I & GMAX Irons: Custom Orders Available Now

Titleist Golf

716 Ap1, Ap2, CB, & MB Irons Release Date: November 1st.
Full Demo Sets Available for on course Trial!

Upcoming Golf Events

Monday, November 9th - A Place of Restoration
Monday, November 16th - NSU Baseball Tournament
Sunday, November 22nd - Turkey Scramble
Tuesday, November 24th - Thanksgiving High School Invitational

Stop By Ellendale Country Club Professional Shop for All Golfing Needs!
(Custom Fitting and Special Ordering Upon Request)

MGA NEWS

My Fellow Members,

The MGA season has commenced. Team Womack edged out Team Crain to retain the Cup on the back of Johnny Glover's victory in the final match. And yes, we did play in that awful deluge. Can't fix stupid, I'm afraid. But despite the terrible weather, I enjoyed myself more in those three days than I have in the last several months. There were no petitions to sign, no whispers and glares sent across an uncomfortable 19th hole, no one refused to play with another individual due to their views on club politics. For three days, we were able to forget about the soap opera that has become our beloved club. The ritual of the ECC Cup embodied what the club should be about – having fun with your fellow members at a beautiful golf course.

As we approach the Winter season, the MGA will be looking for new and creative ways to enhance fellowship amongst all members. If you have any ideas on how we can do that, please contact me to discuss.

On a sadder note, some of you may have heard our beloved Mrs. Betty Daigle has been diagnosed with a brain tumor and will be going into surgery any day now. A GoFundMe account has been set up to assist in the extensive medical bills. Please search your heart and donate what you can to say thanks to a person who has spent countless hours making sure the members of this club enjoy themselves and eat well. The link is:
<http://m.gofund.me/598mkvs4>

Sincerely,
Jeff Bordelon
MGA Chair
VP Board of Governors

FYI:

We offer Direct Debit Via ACH for payments on your membership account. If you would like to enroll in this program, please bring a voided check to the Business Office, and there is also a form to be signed. If you have any questions call the Business Office at 876-4392.

2015

Club Championship Results

Congratulations to this year's Champions
**Casey Rousell, Joann Blanchard,
& Jacob Hamner**

Championship Flight

Winner: Casey Rousell

First Flight

Winner: John Whitman

Second Flight

Winner: Walt Weaver

Third Flight

Winner: Glynn Pitre

Fourth Flight

Winner: Curtis Callais

Ladies Championship

Winner: Joann Blanchard

Junior Championship

Winner: Jacob Hamner

Special thanks to our trophy sponsor:

Mr. Arlen Ledet
Wells Fargo

Tuesday Green Fee Special

Every Tuesday we offer members an opportunity to bring guests to play golf at a discounted rate of \$49. This includes the cart. Please note that this is only available on Tuesdays. Guest must be with the member to get the rate.

Restaurant Hours:

Tuesday through Friday
& Sunday:

Open 11am to 2 pm

Monday, Tuesday &
Saturday:

Restaurant closed (A la
carte served on Satur-
days from 19th Hole).

19th Hole Hours:

Tuesday through Sun-
day:

Open 8 am to 7:00 pm

Monday:

19th Hole closed

Buffet Hours:

Full Buffet -11:00 am till
2:00 pm Thursday,
Friday, & Sunday.



Restaurant News



Happy Thanksgiving from Ellendale Country Club! We would like to inform & remind you that not only are we Open and taking reservations for Thanksgiving Day, we can also assist you in preparing your Thanksgiving Feast. We can help with main dishes, sides, desserts, etc. Call us at 872-9924 to place your order and let us help reduce a little stress from your Holiday. We would like to remind you that the restaurant has re-opened on Tuesdays, but with a limited menu. Wednesdays a soup & salad bar is available and/or you can order off the a la carte menu. Thursdays & Fridays we have a full buffet along with soup, salad & dessert bar, and/or you can also order off the a la carte menu. Sundays we have a special Sunday Brunch buffet from 11am-2pm along with the a la carte menu. Weekly emails are sent out with the Sunday brunch menu.

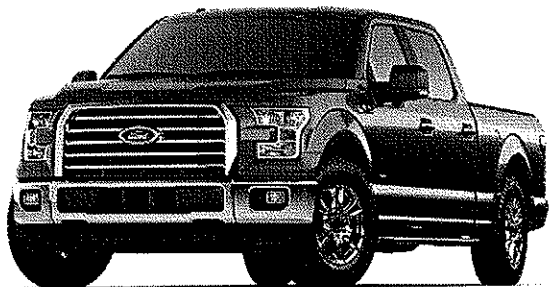
Dinner At Your Door

You can enjoy "Dinner at Your Door" for \$12.95 delivered fresh to Ellendale Subdivision every other Wednesday between 4:00 p.m.- 6:30 p.m. If you don't live in the Ellendale Subdivision, you can still enjoy our delicious & convenient dinner with ease, just call us and we'll have your order ready for pick-up in the 19th Hole. All orders can be directed to the restaurant at ph.872-9924. Call us and let us make dinner a little easier! Dinner at your door that was scheduled for Wednesday, November 18th has been cancelled due to the Special Stockholder's meeting scheduled for that night. Keep your eyes open for next months menu in the December newsletter. Thanks for your support of the Ellendale Country Club restaurant.

Tri-Parish



Truck Talk



NEW 2015 FORD F-150

NORTH AMERICAN

TRUCK OF THE YEAR.

THIS IS THE FUTURE OF TOUGH

THE ALL-NEW F-150



/// FORD.COM



#1 FORD DEALER IN SOUTHEAST LOUISIANA!

2014 total retail sales report: Ford Motor Company

339 St. Charles St. Houma, LA
876-5100 - www.TerrebonneFord.com

This publication is made possible through support from the following sponsors:



Insurance Services

112 Old Towne Blvd. Court
Houma, LA 70360



(985) 868-2436 • fax: (985) 868-2465

UNDERSTAND • SERVICE • INNOVATE



- General Adult & Pediatric Dermatology
- Skin Cancer Surgery
- Laser Hair Removal
- Skin Care Consultation
- Cosmetic Procedures: Botox, Collagen, Chemical Peels, Leg Vein Treatments

*Haydel Dermatology
Sarah Alexander Haydel, M.D.
578 Valhi Blvd.
Houma, Louisiana
(985) 223-3871 Phone
(985) 223-8779 Fax*

Matthew J. Robichaux
Employee Benefits Consultant



Alford, Staples, Lapeyre & Robichaux LLC
1217 Museum Drive
Houma LA 70360
www.aslrllc.com
matthew@aslrllc.com

Colonial Life

Making benefits count.

Office: 985-853-1080
Fax: 985-853-2080
Toll Free: 800-877-4755
(cell) 985-688-8991

ADVERTISING SPACE AVAILABLE

THIS SPACE
AVAILABLE

CALL THE
BUSINESS OFFICE
AT 876-4392
FOR DETAILS!

MEMBER
DISCOUNTS
AVAILABLE!



Commercial

Residential

Marble

Fernis LeBlanc Tile, Inc.

Ceramic—Marble—Granite

238 South Hollywood Rd. Suite 100
Houma, LA 70363

Bus. 985-851-6092 Fax 985-876-6429

Mark LeBlanc

Derek LeBlanc

This is the future you weren't thinking about 10, or 20, or 30 years ago.



What will your world look like 10, or 20, or 30 years from today? No one can be sure — but you can prepare. The sooner you start, the better you can manage whatever life has in store. We can help you make it happen. If you'd like to know how, we'll be glad to talk with you about your future. There's no cost and no obligation.

Arlen Ledet

Senior Vice President – Investment Officer
1340 W. Tunnel Blvd., Ste. 300, Houma, LA 70360
Direct: 985-879-2454
arlen.ledet@wellsfargoadvisors.com
wfadvisors.com/arlen.ledet

Investment and Insurance Products: ► NOT FDIC Insured ► NO Bank Guarantee ► MAY Lose Value

Wells Fargo Advisors, LLC, Member SIPC, is a registered broker-dealer and a separate non-bank affiliate of Wells Fargo & Company. © 2013 Wells Fargo Advisors, LLC. All rights reserved. 0214-05371 [74036-v5] A1638 (1257820_451785)

**Ellendale Country Club
Contact Numbers:**

**Clubhouse/
Bookkeeping/
Membership**

(985) 876-4392
Fax: (985) 876-9896

Golf Shop

(985) 876-4394
Fax: (985) 876-8560

Restaurant

(985) 872-9924
Fax: (985) 872-9925

Pool

(985) 876-4392

Maintenance

(985) 851-1376

*If you expect more
from your bank.*



Let's Go!



985-580-2265
www.CoastalCommerce.com

**ADVERTISING
SPACE
AVAILABLE**




**CALL
985-876-4392
FOR INFO!**

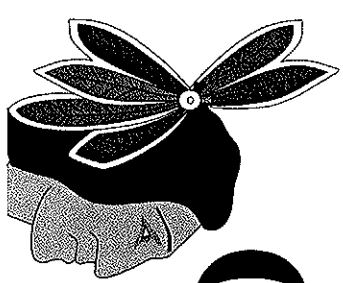
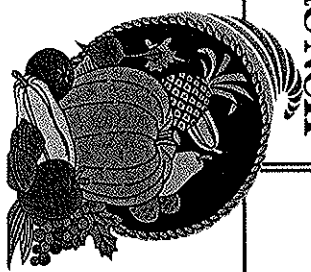
The Ellendale Country Club *Reporter* is published monthly for the membership of Ellendale Country Club. Submissions for the newsletter (including ads) should be delivered to the Administrative Office by the 15th of the month prior to publication.

DeShone Pfister,
Managing Editor

NOVEMBER

2015

Sun	Mon	Tue	Wed	Thu	Fri	Sat
1 SUNDAY BRUNCH	2	3	4 LADIES DAY Dinner @ Your Door	5	6	7
8 SUNDAY BRUNCH	9 A PLACE OF RESTORATION	10	11 LADIES DAY	12	13	14
15 SUNDAY BRUNCH	16 COLONEL BASEBALL GOLF OUTTING	17	18 LADIES DAY Dinner @ Your Door	19	20	21
22 SUNDAY BRUNCH  TURKEY SCRAMBLE	23	24 THANKSGIVING HIGH SCHOOL INVITATIONAL 	25 LADIES DAY	26 Thanksgiving BRUNCH 11:00am-2:00pm 	27	28
29 SUNDAY BRUNCH	30 payments due					



ENTERTAINMENT

COUNTRY

CLUB

