

THE ELLENDALE COUNTRY CLUB
REPORTER

The Official Publication of Ellendale Country Club

Houma, LA

OCTOBER 2015
Volume 23
Number 9



**ELLENDALE
COUNTRY CLUB
BOARD OF GOVERNORS**

2015-2016

ROBBIE NAQUIN,
PRESIDENT

JEFF BORDELON,
VICE PRESIDENT

BRET CUNEO

TROY CUNNINGHAM

FRANCIS "JACK" CLEMENTS

MICHAEL LEDET



**2015
Halloween
Golf Bash**



Date: Friday, October 30th, 2015

Fee: \$120 per Team

Format: Two Person Team

Evening Start Time: 4:30pm Shotgun

Sun Setting Pig Roast Between Shotguns

Night Start Time: 7:30 Shotgun

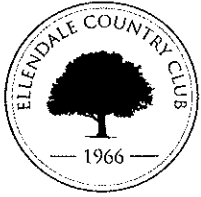
**Costumes are requested!!!!!!!
(Awards presented for best costumes)**

**Includes:
Green and Cart Fee
Glow Balls
Prizes
Beer & Drinks Specials**

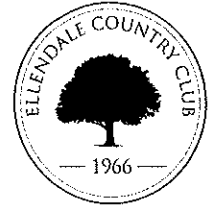
**Sign up @ the Ellendale Country Club Golf
Shop**

**Reservations must be made by:
Thursday, October 29th**

Visit our website at: www.ellendalecountryclub.com



PRESIDENT'S CORNER ROBBIE NAQUIN



To the members of Ellendale Country Club:

I would first like to say it is with much privilege that I am able to serve as your President. I truly love this place, and everything that the Board is doing is solely in the best interest of Ellendale Country Club.

The Board has received a lot of positive feedback from our recent letter to the Membership, which stated the current financial condition that Ellendale is currently facing, and what we are looking to do to quickly remedy the situation. The overall theme of this feedback has been 'transparency'. I think this transparency was very much needed, and I will continue to provide it in every communication, even if it may be long-winded at times. We previously stated that we had two board vacancies to fill, which has since increased to three, as one of our board members had a change in his job duties, and could not contribute the time necessary to the Club. I hope to have that done by the time the newsletter goes out, and will nominate members we see best fit for the task at hand.

Regarding the recent assessment, let me reiterate what was communicated in last month's newsletter. We are starting slowly with the capital expenditures that were addressed in the request for the assessment, the first project being the bulkhead on #6. Once we get our operational budget balanced, and have some clarity regarding what we think our revenue and membership levels will be, then we will be in a better position to continue on with the capital improvements. It does not make sound financial sense to part with cash while there is still uncertainty in our local economy, and I hope everyone understands this position.

In our previous communication, we let the membership know about the changes that were made in the golf course maintenance department. Right now, it is looking like the financial impact will be an improvement of over \$100,000 annually with a reduction in employee expenses, fertilizer & chemical expenses, and other miscellaneous expenses due to a more efficient plan established by our consultant. This will be a large portion of the deficit that we are looking to correct; however, as previously stated, we are extremely focused on the end product of Ellendale Country Club. I think most members can agree that the condition of the golf course is excellent, and a lot of hard work from our General Manager and Staff has gone into that change. If there is any deviation from that goal, please inform our General Manager or the Board, as we are working for you.

Also, we stated that we will next be looking at the Food and Beverage department. That work has already begun, and it certainly will not end there. Many have expressed concerns about expenses in other areas, and rest assured, everything is in play. Once we figure out what some of those changes will be, we will be sure to let the membership know, and like the example above, will illustrate to you the financial impact of said changes, while working to ensure that those changes do not impact the quality of our club.

Another major goal of this Board will be long term planning. A primary function of a board is to set the long term goals of an organization. I feel like this has not been a major focus, and that will change. We will begin to set long term, realistic Capital Expenditure plans, and more importantly, show you how we plan on paying for it. For the next annual stockholder's meeting, I would like to have more than just financials for the membership to review. We will work to have a detailed Annual Report that shows some key financial take-aways and statistics, as well as some of the long term goals we have in a 5-10 year 'roadmap'.

Finally, although we have focused on expense cutting, we will also start looking at growing revenues and reducing our long term debt. One thing we can do as a club is a large fundraiser, much like the Houma Oilman's tournament, to be held annually with **the sole purpose of funds raised being debt reduction**. We have an excellent membership, and I think we will be able to pull everyone together for this great cause. Let's say we were able to come together and raise \$100,000 as a club annually. At our current interest rate, this would accelerate the current payback period to less than 10 years (compared to the roughly 14 years we have remaining). More importantly, this could save the Club just under \$400,000 in interest expense over the remaining life of the loan.

We have a very strong Board and Staff in place with the appropriate skill sets needed to address the problems we currently face. We are quickly working to get our budget balanced, and will be communicating with the membership every step of the way on our progress. Some members are worried that the Club will go under. Rest assured that with the current board in place, with the actions we have and will continue to take, and with our cash on hand, this should not be an issue; however, if we continued down the same path we were on, this would be a legitimate concern. Any steps backwards in terms of board composition, personnel changes, or personnel additions due strictly to personal reasons will surely move us in the wrong direction. The potential end result of such an action would not be fair to our membership, especially our Legacy Members. I ask again that the membership be patient with this board, and give us a chance to **continue to show you results**. And as always, I encourage you to **come out to Ellendale and enjoy yourself!**

2015 Men's Member Member Championship Results

Overall Champions

Curtis Callais & Mike Tingle

Championship Flight

Winners: Carey Spence & Mark Renner

Runner-Up: Skippy Jones & Pat Ellender

1st Flight

Winners: Bret Cuneo & Matt Petersen

Runner-Up: Peyvand Maghsoud & Bennett Folse

2nd Flight

Tied-1st: Chad Wiley & Tristan Rogers

Tied-1st: Dusty Dupre & Brad Deroche

Tied-1st: Troy Baronet & Don Callais

3rd Flight

Winners: Marshall Faulk & Eddie Evans

Tied-2nd: Danny Blanchard & Bill Rigsby

Tied-2nd: Glynn Pitre & Mike Ledet

4th Flight

Winners: Mike Tingle & Curtis Callais

Runner-Up: Mitch Lecompte & Hilary Domangue

From the Ladies Tees

The Ellendale Women's Golf Association



There is a new golf mentoring program for women and girls interested in picking up the game of golf. If any you or your daughters are interested in learning more about golf and how it's played, leave a message in the Pro Shop or visit the Ellendale Ladies' Golf Association Facebook to arrange a meet up.

Every Wednesday morning is Ladies' Day at Ellendale, and golfers of all skill levels are invited to play. We have standing tee times at 9:00, 9:10 and 9:20. Interested players in need of a foursome should arrive no later than 8:45

Fall Match Play is progressing at a nice pace and there have been some great matches. Good luck to those still in it!

Many of our women golfers are members of the New Orleans Women's Golf Association (NOWGA). On September 15 NOWGA held a best nine event at Timberlane Country Club. Ellendale swept the fifth flight with Monica Folse in 1st, Joy Tingle in 2nd and Liz Robards taking 3rd. Congratulations to these golfers! The next NOWGA event is October 27 at La-Tour. Good luck to all Ellendale participants!

Scrambles are a great way to introduce beginning golfers to the fun of the game. The September 13th scramble was well attended and great fun for all. Sign up in the Pro Shop for the next co-ed scramble, which is on October 18th at 3pm. Additionally, the very popular Glow Golf scramble is October 30th. Sign up early for this fun event and start collecting your light-up accessories!

Golf Car Rental Fee Structure Update:

9 Hole Rate: \$10.00 plus tax

18 Hole Rate: \$18.00 plus tax

(Effective October 1st, 2015)

Local Golf Cart Rules Reminder:

- * Carts must stay on path on all Par 3's.
- * Green and White stakes in front of green means return to cart path.
- * Carts are not allowed on side of greens or beside them.

Golf Rule of the Month:

A competitor removes the flagstick and places it on the putting green near the hole. After the competitor putts, his fellow competitor sees that the competitor's ball in motion might strike the unattended flagstick. The fellow competitor picks up the flagstick before the ball reaches it, allowing the ball to roll beyond where the removed flagstick had been placed. What is the ruling?

- A. There is no penalty**
- B. The fellow-competitor incurs a penalty of two strokes**
- C. The competitor incurs a penalty of two strokes**

Answer: See page 5

GOLF NEWS

THE GOLF REPORT

GREG CRAIN

HEAD GOLF PROFESSIONAL

Fall has finally arrived at Ellendale Country Club...Hip, Hip, Hooray!!!! Everyone has been waiting for the rain and heat of Summer to finally end and for the cooler temperatures of October to arrive for great enjoyable golfing at Ellendale.

Congratulations to Kevin Killian and Joe Bennett on their win of the final MGA event of the season. Both Kevin and Joe each played an exceptional round of golf with Kevin firing an 8 under par 64 and Joe shooting a net score of 61 in the "One Man One Mulligan" format. This event concluded the year end point totals for the MGA Ellendale Cup. The top 26 players that qualify will compete on October 24th and 25th in the Ryder Cup format. Congratulations to the following players: Bret Cuneo, Ross Bernal, Skippy Jones, James Champagne, Craig Matherne, Braden Eschete, Mike Kreller, Joe Bennett, Troy Baronet, Troy Cunningham, Rocky Laliberte, Brett Rutledge, Johnny Glover, Dio Tadimi, Drew Rice, Jonathan Rhodes, Arlen Ledet, Robbie Naquin, Mike Samanie, Don Callais, George Robertson, Kirk Trussell, Mike Peoples, Ray Hebert, Jeff Bordelon and Hunter Haydel. Congratulations to everyone and good luck to both teams for the Ellendale Cup.

This month is very active with golf events. This month welcomes the SCIA on October 5th. October 10th and 11th will be the Club Championship, October 12th is the Troop C Grant-A-Wish, October 18th is the Sunday Scramble at 3:00, October 19th is 16th Annual Joe Waitz, Jr Golf Classic, October 24th and 25th is the Ellendale Cup and October 30th is the Glow Ball. Please come out to the course and show your support for these upcoming activities.

Be sure to check the calendar, website and postings at the Golf Shop and clubhouse for upcoming events. And always, thanks for your support of the Golf Shop and Ellendale Country Club.

FYI:

We offer Direct Debit Via ACH for payments on your membership account. If you would like to enroll in this program, please bring a voided check to the Business Office, and there is also a form to be signed. If you have any questions call the Business Office at 876-4392.

"2015 New Arrivals"

Adidas Golf

-Men's & Women's Climacool Apparel
All New Men's Climachill Apparel

Ashworth

Cardiff Footwear Special
Sale Price: \$99.99

Callaway Golf

-Big Bertha Alpha 816 Series Driver, Fairway Woods, Hybrids
-Great Big Bertha Series Driver, Fairway Woods, Hybrids

Mizuno Golf

Mizuno Fitting Cart with the latest shaft optimizer and iron model in multiple head weights, Shaft Optimizer software program contains bend profiles for all 47 shafts offered

Nike Golf

-Tiger Woods & Tour Performance Apparel
-Men's & Women's LSU & Saints Apparel
-Men's & Women's F1 Impact 2 Footwear
-Men's TW '15 Footwear Special

Ping Golf

-New Ping I & GMAX Irons: Custom Orders Available Now

Titleist Golf

- 716 Ap1, Ap2, CB, & MB Irons Release Date: November 1st.

Upcoming Golf Events

Monday, October 5th - SCIA

Saturday & Sunday, October 10th & 11th -
Club Championship

Monday, October 12th - Troop C Grant-A-Wish

Sunday, October 18th - Sunday Football Scramble

Monday, October 19th - Joe Waitz Jr.

Saturday & Sunday, October 24th & 25th - MGA
Ellendale Cup

Friday, October 30th - Halloween Golf Bash

Monday, November 9th - A Place of Restoration

Monday, November 16th - NSU

**Stop By Ellendale Country Club Professional Shop for All Golfing Needs!
(Custom Fitting and Special Ordering Upon Request)**

MGA NEWS

Dear MGA Members,

It was a hard fought season but the final points are in. I would like to congratulate the following golfers for making it into the 2015 Ellendale Cup: Bret Cuneo, Ross Bernal, Skippy Jones, James Champagne, Craig Matherne, Braden Eschete, Mike Kreller, Joe Bennett, Troy Baronet, Troy Cunningham, Rocky Laliberte, Brett Rutledge, Johnny Glover, Dio Tadimi, Drew Rice, Jon-Jon Rhodes, Arlen Ledet, Robbie Naquin, Mike Samanie, Don Callais, George Robertson, Kirk Trussell, Mike Peoples, Ray Hebert, Hunter Haydel (and yours truly). This is a group of hardened competitors and should make for an interesting Cup. Please stay tuned for details on the time and location of the draw party prior to the weekend of the Cup.

Our season long match play event is narrowed down to Ernie Bennett Sr., Kevin Faulk and Thad Allemand. Having lost to Ernie personally, in what could best be described as a "mercy killing", I would like to wish Kevin and Thad the best of luck. May the best golfer win!

The weather has given teases of Fall and Winter temperatures lately, and the course is looking prettttttyyyyy fine. Please get out the office after work or during the weekend, and come enjoy the facilities. And as always... make sure to fix those divots!

Sincerely,
Jeff Bordelon
MGA Chair
Board of Governors



Way to Go, **Danny Gunn**, who hit a **Hole-In-One** here at ECC on Hole#13 with a 9 Iron. This Awesome shot was made on 9/22/15 and witnessed by Stacy Hudson & Wayne Chatagnier.

Way to Go, Danny!!!

A REMINDER TO MEMBERS FOR TOURNAMENT DAYS

We have a reciprocal agreement in place with Atchafalaya Golf Course. On days when Ellendale is hosting a tournament, a member of Ellendale Country Club can play at Atchafalaya Golf Course for \$20.00 plus tax. Tee time arrangements must be made by an Ellendale PGA Professional 48 hours in advance. In turn, we will allow their members to play here when they have tournaments for the same \$20.00 plus tax rate.

We would like to Welcome the following new members and their families to Ellendale Country Club!

Jonathan Harper
Lee Welch
Current Membership Total: 489

GARDENS - N - GOLF

Debi Samanie, Chairman

This month our Garden Club will be trying to clean up and plant the front entrance to the Club. Keep your eyes open for these improvements. The Garden Club is seeking new members who would like to help keep Ellendale beautiful. If you would like to help by donating money, your time, or even your ideas please contact me, Debi Samanie at 804-2161 or DeShone at ECC office at 876-4392.

Tuesday Green Fee Special

Every Tuesday we offer members an opportunity to bring guests to play golf at a discounted rate of \$49. This includes the cart. Please note that this is only available on Tuesdays. Guest must be with the member to get the rate.

Golf Rule of the Month:

Answer: A. There is no penalty. Decision 17-1/7

Restaurant Hours:

Tuesday through Friday & Sunday:

Open 11am to 2 pm

Monday, Tuesday & Saturday:

Restaurant closed (A la carte served on Saturdays from 19th Hole).

19th Hole Hours:

Tuesday through Sunday:

Open 8 am to 7:00 pm

Monday:

19th Hole closed

Buffet Hours:

Full Buffet -11:00 am till 2:00 pm Thursday, Friday, & Sunday.



Restaurant News



We would like to remind you that the restaurant has re-opened on Tuesdays, but with a limited menu. Wednesdays a soup & salad bar is available and/or you can order off the a la carte menu. Thursdays & Fridays we have a full buffet along with soup, salad & dessert bar, and/or you can also order off the a la carte menu. Sundays we have a special Sunday Brunch buffet from 11am-2pm along with the a la carte menu. Weekly emails are sent out with the Sunday brunch menu.

Dinner At Your Door

“Dinner at Your Door” is scheduled for Wednesday, October 7th & Wednesday, October 21st. You can enjoy “Dinner at Your Door” for \$12.95 delivered fresh to Ellendale Subdivision every other Wednesday between 4:00 p.m.– 6:30 p.m. If you don’t live in the Ellendale Subdivision, you can still enjoy our delicious & convenient dinner with ease, just call us and we’ll have your order ready for pick-up in the 19th Hole. All orders can be directed to the restaurant at ph.872-9924. Call us and let us make dinner a little easier!

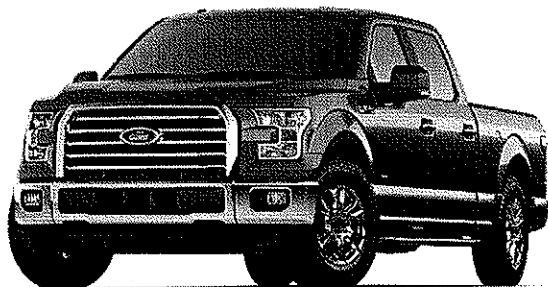
MENU

- October 7th:** Lasagna Rolls, Green Beans, Garlic Bread, Caesar Salad & Dessert
- October 21st:** Pork Roast with Rice & Gravy, Cabbage, Bread, Salad & Dessert

Tri-Parish



Truck Talk



NEW 2015 FORD F-150

NORTH AMERICAN TRUCK OF THE YEAR.

THIS IS THE FUTURE OF TOUGH

THE ALL-NEW F-150

/// FORD.COM



#1 FORD DEALER IN SOUTHEAST LOUISIANA!

2014 Local retail sales report. Ford Motor Company.

**339 St. Charles St. Houma, LA
876-5100 - www.TerrebonneFord.com**

This publication is made possible through support from the following sponsors:



Insurance Services

112 Old Towne Blvd. Court
Houma, LA 70360



(985) 868-2436 • fax: (985) 868-2465

UNDERSTAND • SERVICE • INNOVATE



- General Adult & Pediatric Dermatology
- Skin Cancer Surgery
- Laser Hair Removal
- Skin Care Consultation
- Cosmetic Procedures: Botox, Collagen, Chemical Peels, Leg Vein Treatments

*Haydel Dermatology
Sarah Alexander Haydel, M.D.
578 Valhi Blvd.
Houma, Louisiana
(985) 223-3871 Phone
(985) 223-8779 Fax*

Matthew J. Robichaux
Employee Benefits Consultant



Allford, Staples, Lapeyre & Robichaux LLC
1217 Museum Drive
Houma LA 70360
www.asrlc.com
matthew@asrlc.com

Colonial Life

Making benefits count.

Office: 985-853-1080
Fax: 985-853-2080
Toll Free: 800-877-4755
(cell) 985-688-8991

ADVERTISING SPACE AVAILABLE

THIS SPACE
AVAILABLE

CALL THE
BUSINESS OFFICE
AT 876-4392
FOR DETAILS!

MEMBER
DISCOUNTS
AVAILABLE!



Commercial

Residential

Marble

Fernis LeBlanc Tile, Inc.

Ceramic—Marble—Granite

238 South Hollywood Rd. Suite 100
Houma, LA 70363

Bus. 985-851-6092 Fax 985-876-6429

Mark LeBlanc

Derek LeBlanc

This is the future you
weren't thinking about
10, or 20, or 30 years ago.



What will your world look like 10, or 20, or 30 years from today? No one can be sure — but you can prepare. The sooner you start, the better you can manage whatever life has in store. We can help you make it happen. If you'd like to know how, we'll be glad to talk with you about your future. There's no cost and no obligation.

Arlen Ledet

Senior Vice President — Investment Officer
1340 W. Tunnel Blvd., Ste. 300, Houma, LA 70360
Direct: 985-879-2454
arlen.ledet@wellsfargoadvisors.com
wfadvisors.com/arlen.ledet

Investment and Insurance Products: ► NOT FDIC Insured ► NO Bank Guarantee ► MAY Lose Value

Wells Fargo Advisors, LLC, Member SIPC, is a registered broker-dealer and a separate non-bank affiliate of Wells Fargo & Company.
© 2013 Wells Fargo Advisors, LLC. All rights reserved. 0214-05371 [74036-v5] A1638 (1257820_451785)

**Ellendale Country Club
Contact Numbers:**

**Clubhouse/
Bookkeeping/
Membership**

(985) 876-4392
Fax: (985) 876-9896

Golf Shop

(985) 876-4394
Fax: (985) 876-8560

Restaurant

(985) 872-9924
Fax: (985) 872-9925

Pool

(985) 876-4392

Maintenance

(985) 851-1376

*If you expect more
from your bank.*



Let's Go!



985-580-2265
www.CoastalCommerce.com

**ADVERTISING
SPACE
AVAILABLE**

**CALL
985-876-4392
FOR INFO!**

The Ellendale Country Club *Reporter* is published monthly for the membership of Ellendale Country Club. Submissions for the newsletter (including ads) should be delivered to the Administrative Office by the 15th of the month prior to publication.

DeShone Pfister,
Managing Editor

OCTOBER

2015

Sun

Mon

Tue

Wed

Thu

Fri

Sat

ELLENDALE COUNTRY CLUB

Sun	Mon	Tue	Wed	Thu	Fri	Sat
4 SUNDAY BRUNCH	5 SCIA	6	7 LADIES DAY DINNER @ YOUR DOOR	8	9	10 CLUB CHAMPIONSHIP
11 SUNDAY BRUNCH CLUB CHAMPIONSHIP	12 GRANT-A-WISH	13	14 LADIES DAY	15	16	17
18 SUNDAY BRUNCH SUNDAY FOOTBALL SCRAMBLE	19 JOE WAITZ JR.	20	21 LADIES DAY DINNER @ YOUR DOOR	22	23	24 E.C.C CUP
25 SUNDAY BRUNCH E.C.C CUP	26	27	28 LADIES DAY	29	30 HALLOWEEN GOLF BASH (GLOW BALL)	31 BILLS DUE!

